

Frequently Asked Questions in Regard to Re-opening the District in August

Q: Will my student have to wear a face covering?

A: Students will have the option of whether or not to wear face coverings, but will NOT be required to. If a student or their parents choose this, the district will support the decision.

Q: Will the staff wear face coverings?

A: Teachers will be permitted to choose whether or not to wear a face covering, especially when teaching certain subjects. Teachers will be encouraged to wear a face covering when dealing with the public.

Q: Will there be a daily screening of students and temperature checks?

A: As of July 13, 2020, we are still waiting for word from the authorities to make a final decision on this. We are currently working on our school app in order to have parents do the screening daily before sending their child to school. If the school were required to do the screening, it would take an immense amount of time each morning and the learning time would be lost. We will communicate to parents as soon as we have a solid answer; however, we are not planning to physically screen students. We will use the app and those who have not cleared the app screening before 8:00 in the morning will be red flagged that they should be absent.

Please download the **FREE** Dolores School District App, available on both Android and iOS platforms. Don't forget to allow push notifications!

<https://apps.apple.com/app/id1481330805>

<https://play.google.com/store>

CONTINUUM OF SCREENING



1

HOME is the first point on the screening continuum.

LEAs should educate and support families on identifying the symptoms that indicate staff and students must stay at home. Families should be encouraged to self-report symptoms of illness, including: Fever, new onset of cough, etc.

Self-reporting mechanisms could include: calling the school, calling health care provider, etc.



2

TRANSPORTATION is the second point on the screening continuum.

LEAs should use clearly visible signage to communicate the symptoms students should NOT have if traveling on a school bus.



3

SCHOOL is the final point on the screening continuum.

LEAs staff should visually check for symptoms, which may include temperature checks, and/or confirm with families that students are COVID-19 symptom-free. *Follow up with healthcare professional.

Q: Will students eat lunch in the cafeteria (commons)?

A: According to the guidelines given to school districts, size of gatherings is limited. It is recommended that students eat in their classrooms. Food from the school kitchen will be delivered to students ordering lunch. Plans for the secondary school are underway.

Q: Will my high school student be able to go off campus for lunch?

A: Students in grades 10-12 will be allowed to go off campus for lunch. Until we have clearer guidelines from the Department of Education, we will not be able to have the ninth grade off campus. The major reasoning for keeping ninth graders on campus is due to the fact that most do not drive and would be getting in vehicles with older students. This is not in line with the requirements we must keep. We ask that parents talk with their students about having too many in a vehicle at one time.

Q: Will staff go through a screening process daily?

A: Yes! Every staff member will complete the recommended screening by the CDC each day.

Q: How will the buildings be cleaned and sanitized?

A: The district will invest in tools and equipment: non-latex gloves, non-touch thermometers, masks, eye protection, tissues, no-touch trash cans, soap, hand sanitizer with at least 60% alcohol (for staff and older children who can safely use hand sanitizer). The custodians will follow the disinfecting guidelines provided by the CDC and the Department of Education. <https://covid19.colorado.gov/cleaning-guidance>

Q: What will recess look like?

A: In the elementary, we will make every attempt to keep the same group of students in one class in the same play area. Students will have outdoor recess and outdoor education. The play areas will be regularly disinfected. Students will be led to wash their hands after recess and before returning to class.

Q: Are there limitations on class sizes?

A: Yes. At this time, the class sizes are limited to 20-25. This is great for our District! We have very few classes that are larger. This will be a challenge for some of the secondary elective classes. The secondary administration is working on plans to address this.

Q: Can we offer any input or feedback on the re-entry plans?

A: Absolutely! Throughout the plan, there are links for parent/guardian input. You may also email the district or superintendent at lrichard@dolores.k12.co.us

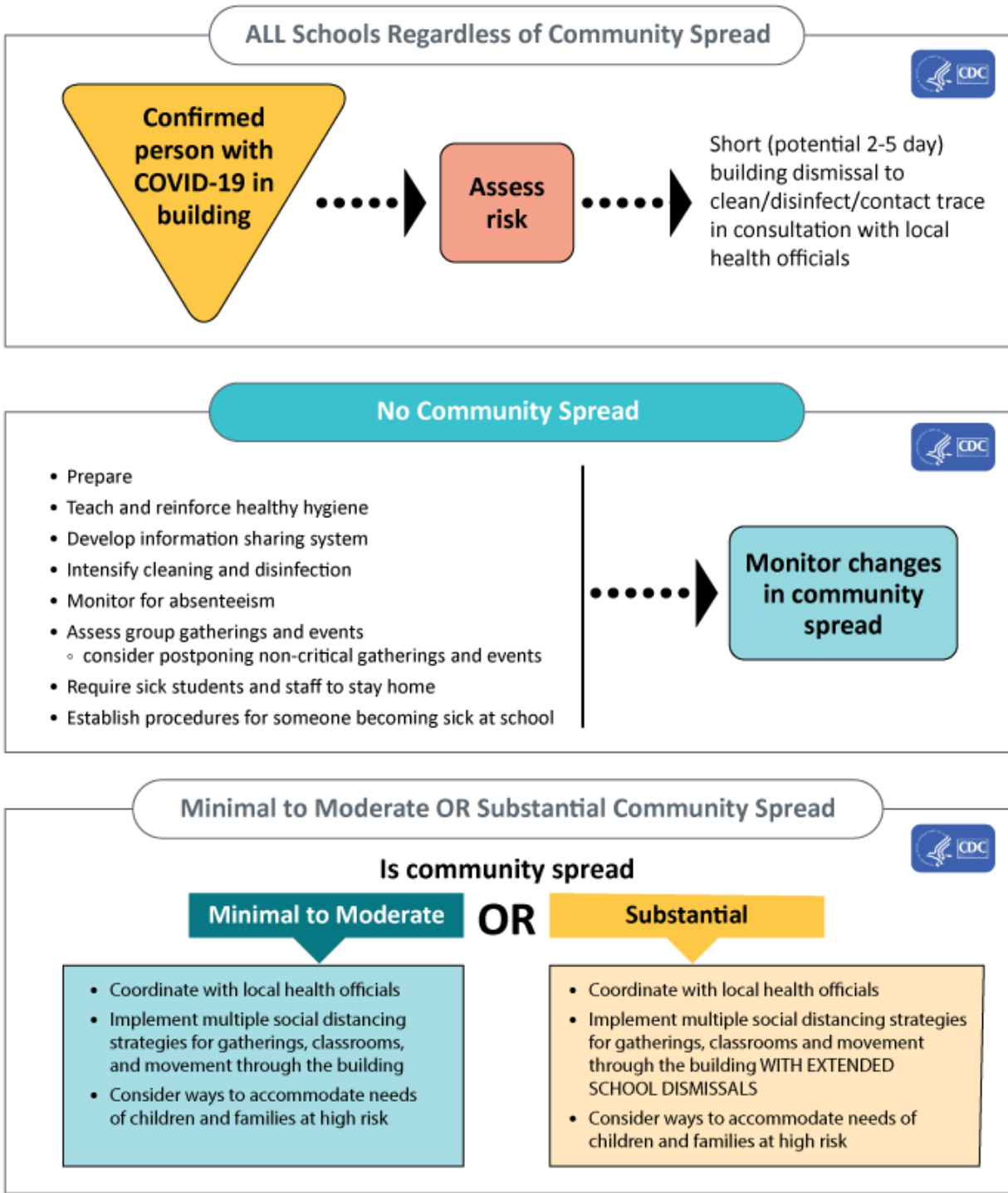
Q: What if our family does not feel comfortable returning to in-person learning at school?

A: Please let the district office know this right away in order for the school administrators to contact you and help coordinate a plan. There are options

available to you. The Colorado Department of Education is making allowances for districts to work with this scenario.

Q: What is the process if someone tests positive or is symptomatic?

A: See the flow chart below:



Q: Will visitors be allowed on campus?

A: We are asking for visitors to be limited. Only those visitors that are state employees, first responders, or parents with an emergent need will be allowed on campus. Visitors will be required to check in at the office and wear a mask while on campus.

Q: What do experts say about reopening in the fall?

A: <https://www.washingtonexaminer.com/opinion/editorials/this-fall-get-the-children-back-in-school>

This is just one resource but there are others.